

DF250RTS零件目录图册

DF250RTS PARTSLIST



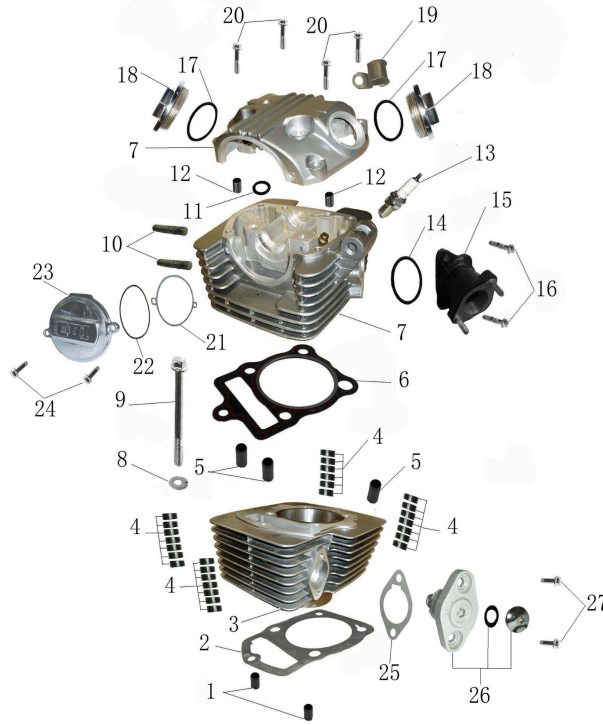
FOREWORD

When you are going to order parts you may take this booklet as reference but any differences please take the reality on vehicle as standard. To find out the name, Item

code or fitment you may check in the illustration with the size and appearance .Then with the no. in the illustration you will find out the name, item code and quantity.

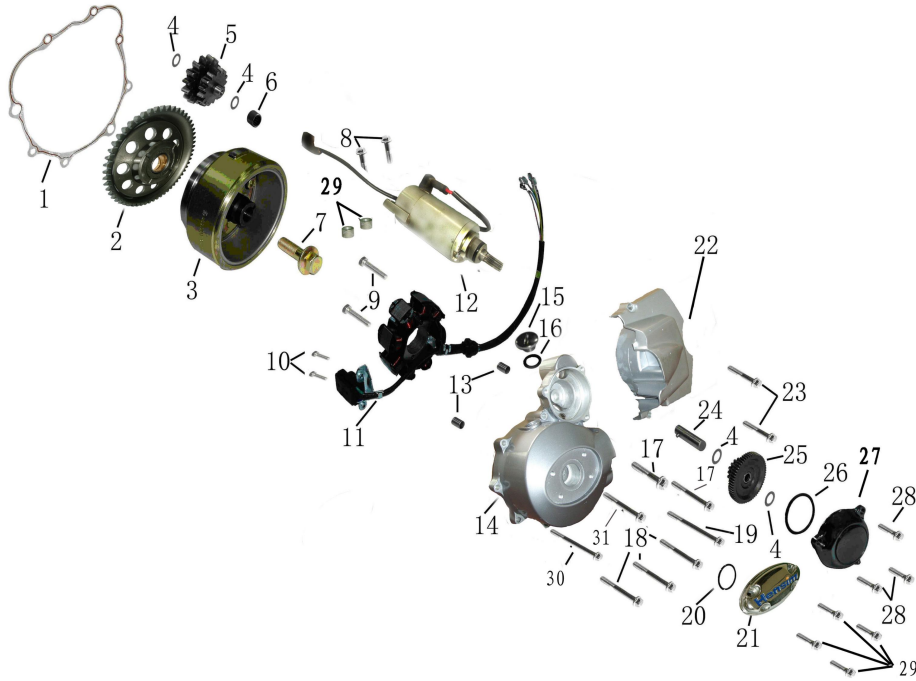
There will no notice to you ahead of any change of the information in this booklet.

1.气缸头部件/气缸体部件Cylinder Head ASSY/Cylinder ASSY



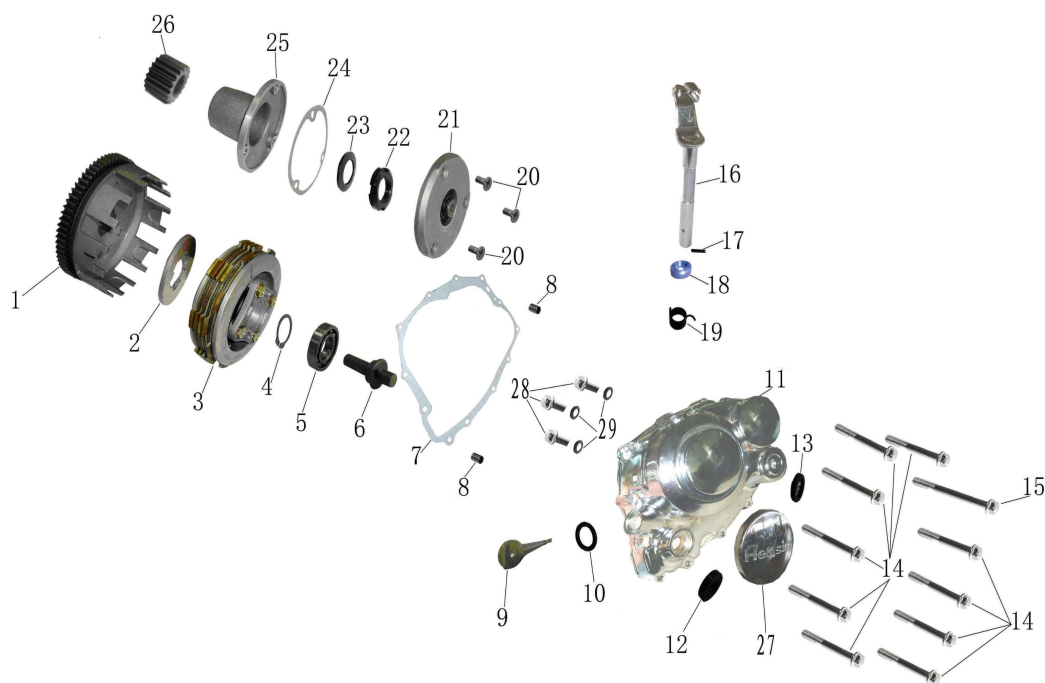
序 NO.	件号 Item Code	中文名称 Chinese	英文名称 Description	数量 Q'ty	单价	
					¥	\$
1	FJ100-000001-1014	定位销φ10×14	Pin φ10×14	2		0.10
2	FN300-010014-0000	缸体密封垫	Cylinder Block Gasket Assy	1		0.70
3	FN300-015001-0000	气缸体	Cylinder Block Assy	1		30.40
4	FN300-015005-0000	减震橡胶块	Rubber Cushion block	27		
5	FJ100-000001-1020	定位销φ10×20	Pin φ10×20	3		0.11
6	FN300-010050-0000	缸头密封垫	Cylinder Head Gasket	1		8.00
7	FN300-011100-0000	气缸头组合	Cylinder Head Gasket Assy	1		
8	FJ100-000002-0002	铝垫φ6×11×1.5	Washer φ6×11×1.5	1		0.10
9	Q/HSQ 5787-2003	螺栓M6×116	Bolt M6×116	1		N/A
10	FJ100-011012-0000	排气管双头螺栓M8×40	Inlet Pipe Stud Bolt M8x40	2		N/A
11	FN300-010008	矩形圈6.5×14×2.5	Rectangular Ring 6.5×14×2.5	1		0.20
12	FF100-000001-0812	定位销φ8×12	Pin φ8×12	2		0.10
13	FJ100-010001-0000	火花塞	Spark Plug	1		3.00
14	Q/HSQ 7757-2003	O型圈φ33.5×3	O Ring φ33.5×3	1		0.54
15	FJ100-010030-0000	进气管	Inlet Pipe Assy	1		6.00
16	GB/T 5783-2000	螺栓M6×20	Bolt M6×20	2		N/A
17	Q/HSQ 7757-2003	O形密封圈φ35×3	O Ring φ35×3	2		
18	FJ100-010003-0000	气门盖	Cover, Valve Chamber	2		2.00
19	FJ100-010041-0000	高压线夹	Wire Clip	1		
20	Q/HSQ 5787-2003	螺栓M6×35	Bolt M6×35	4		N/A
21	FJ200-010004-0000	缸头左盖密封垫	Cylinder Head Gasket	1		
22	Q/HSQ 7757-2003	O型密封圈φ75×2.5	O Ring φ75×2.5	1		
23	FJ200-010003-0000	缸头左侧盖	Left Cover of Cylinder Head	1		
24	Q/HSQ 5787-2003	螺栓M6×20	Bolt M6×35	2		
25	FJ200-014001-0000	张紧器密封垫	Gasket, Tension	1		
26	FJ200-011400-0000	张紧器总成	Tension Assy	1		
27	Q/HSQ 5787-2003	螺栓M6×16	Bolt M6x16	2		

3. 磁电机、起动电机、左曲轴箱盖Left Crankcase Cover\Magneto\start motor



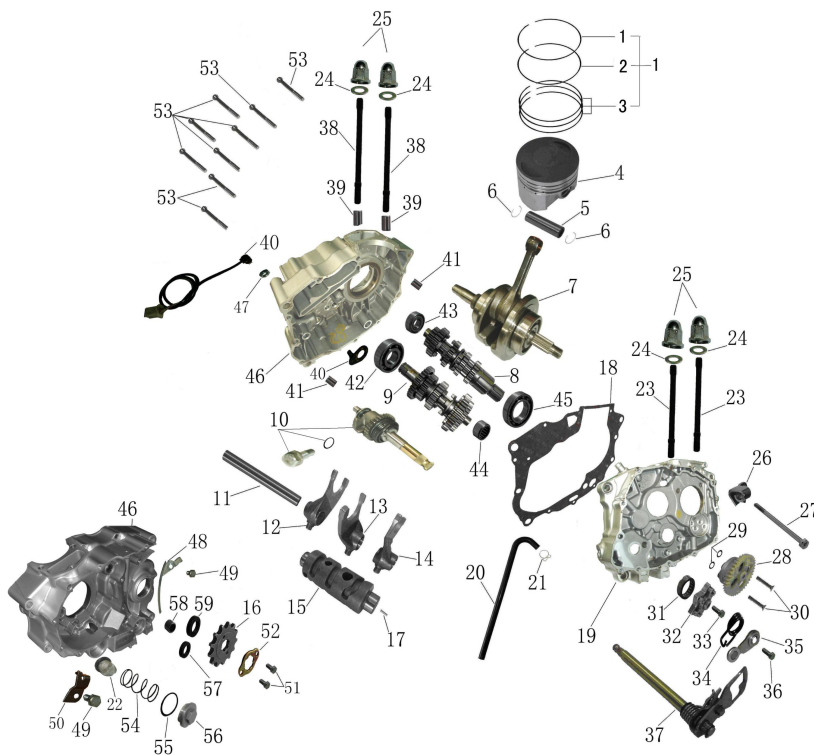
序 NO.	件号 Item Code	中文名称 Chinese	英文名称 Description	数量 Q'ty	单价	
					¥	\$
1	FJ200-030048-0000	左曲轴箱盖垫	Gasket,L. Crankcase Cover	1		0.58
2	FN300-062017-0000	大齿（链）盘组合	Gear Plate Assy	1		9.30
3	FN300-071001-0000	飞轮	Rotor ASSY,Magneto	1		16.73
4	FJ100-062023-0000	垫片	Washer	4		0.13
5	FJ200-062019-0000	双联齿轮（一）	Gear Reduction 1	1		4.70
6	GB/T 290	滚针HK10/14/10	Roll bearing HK10/14/10	1		0.48
7	FJ100-020005-0000	螺栓M10×35	Bolt M10×35	1		0.58
8	Q/HSQ 5787-2003	螺栓M6×32	Bolt M6×32	2		N. A
9	GB/T 5783-2000	螺栓M5×25	Bolt M5×25	2		N. A
10	GB/T 818-2000	螺栓M4×10	Bolt M4×10	2		N. A
11	FN300-071100-0000	定子组合	Stator ASSY,Magneto	1		14.68
12	FN300-062100-0000	起动电机组组合	Starting Motor ASSY	1		26.27
13	FJ100-000001-1014	定位销φ10×14	Pin φ10×14	2		0.10
14	FJ200-035001-0000	左前盖	Front Part,L crankcase cover	1		7.00
15	FF100-035005-0000	视孔盖A	Cap,Small View Hole	1		1.00
16	Q/HSQ 7757-2003	O型圈φ13×2.65	O Ring φ13×2.65	1		0.05
17	Q/HSQ 5787-2003	螺栓M6×50	Bolt M6x50	2		N. A
18	Q/HSQ 5787-2003	螺栓M6×25	Bolt M6×25	3		N. A
19	Q/HSQ 5787-2003	螺栓M6×55	Bolt 螺栓M6×55	2		N. A
20	Q/HSQ 7757-2003	O型圈φ27.4×2.4	O Ring φ27.4×2.4	1		0.10
21	FJ200-035006-0000	左字头盖	Decorate cover L,Crankcase Cover	1		1.22
22	FJ200-035002-0000	左后盖	Rear part,L.Crankcase Cover	1		7.00
23	Q/HSQ 5787-2003	螺栓M6×28	Bolt M6x28	2		N. A
24	FJ200-062029-0000	双联齿轮（二）轴组合	axle Reduction 2	1		0.70
25	FJ200-062020-0000	双联齿轮（二）组合	Gear Reduction 2	1		5.60
26	Q/HSQ 7757-2003	O型圈φ62×3	O Ring φ62×3	1		0.23
27	FJ200-035003-0000	齿轮室盖	Cover ,Reduction Gear	1		5.00
28	Q/HSQ 5787-2003	螺栓M6×20	Bolt M6x20	3		N. A
29	Q/HSQ 5787-2003	螺栓M6×12	Bolt M6x12	4		N. A
30	Q/HSQ 5787-2003	螺栓M6×35	Bolt M6x35	1		N. A
31	Q/HSQ 5787-2003	螺栓M6×45	Bolt M6x45	1		N. A

4、离合器、右曲轴箱盖 Clutch, Crankcase Cover R.



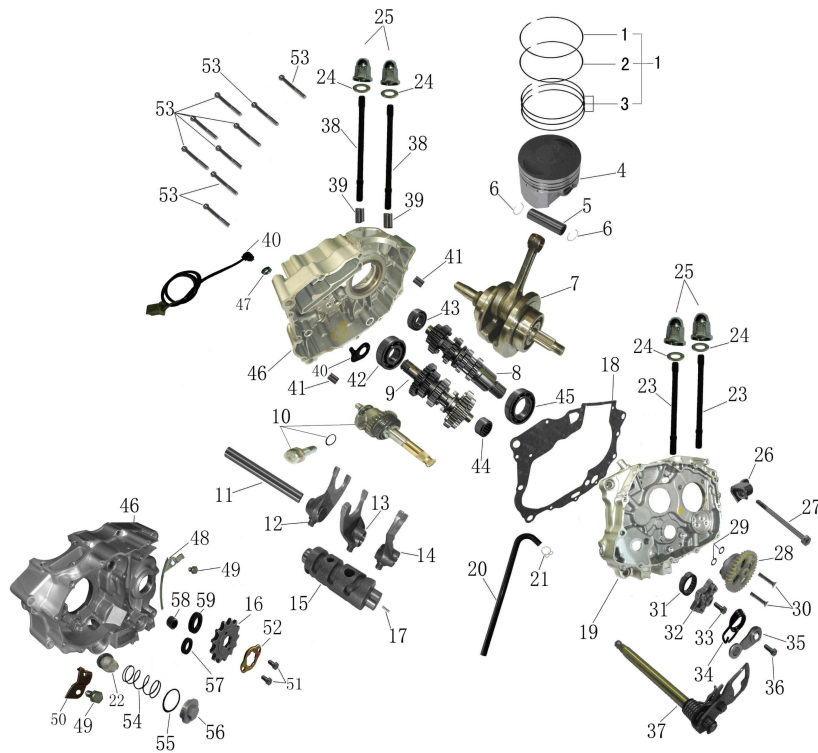
序 NO.	件号 Item Code	中文名称 Chinese	英文名称 Description	数量 Q'ty	单价	
					¥	\$
1	FN200-052000-0000	主离合器部件	Out Case Cover, Clutch	1		
2	FJ100-052007-0000	花键垫圈	Washer for Spline	1		
3	FN200-052200-0000	从动盘组合	Driven plate ASSY, Clutch	1		
4	FN200-041012-0000	主轴挡圈	Check Ring	1		
5	GB/T 276-1994	轴承6003	Bearing 6003	1		
6	FN200-052013-0000	分离杆	pushing Rod, Clutch	1		
7	FJ200-030047-0000	右曲轴箱盖垫	Gasket, Right Crankcase	1		
8	FF100-000001-0812	定位销Φ8×12	Locate Pin Φ8×12	2		
9	FJ100-034005-0000	机油尺	Oil Gauge ASSY	1.00		
10	Q/HSQ 7757-2003	O型圈Φ18×3	O Ring Φ18×3	1		
11	FN300-034100-0000	右曲轴箱盖组合	Cover Assy, Right Crankcase	1		
12	Q/HSQ 546-2007	起动轴油封16×28×7	Oil Seal 16×28×7	1		
13	FF100-034109-0000	机油视孔窗	Oil Lever Sight Window	1		
14	Q/HSQ 5787-2003	螺栓M6×40	Bolt M6×40	10		
15	Q/HSQ 5787-2003	螺栓M6×50	Bolt M6×50	1		
16	FJ100-034104-0000	离合器分离杆组合	Control Arm ASSY, Clutch	1		
17	GB/T 879	销3×16	Pin 3x16	1		
18	Q/HSQ 546-2007	离合器分离杆油封12×22×5	Oil Seal 12x22x5	1		
19	FJ200-034010-0000	回位弹簧	Spring, Control Arm ASSY	1		
20	GB/T 819.1-2000	十字槽沉头螺钉M5×10	Screw M5x10	3		
21	FN200-020103-0000	滤清器盖	Oil Filter Cover	1		
22	FJ100-020107-0000	圆螺母	Oil Filter Nut	1		
23	FJ100-020108-0000	碟形垫圈	Dish Washer	1		
24	FJ100-020102-0000	密封垫	Gasket, Oil Filter	1		
25	FN200-020101-0000	滤清器体	Rotor, Oil Filter	1		
26	FJ200-022201-0000	主动齿	Primary Drive gear	1		
27	FN200-034003-0000	右字头盖	Cover, Right Crankcase Cover	1		
28	Q/HSQ 5787-2003	螺栓M6×14	Bolt M6X14	3		
29	FJ100-034004-0000	复合垫圈 6×14×1.5	Washer 6x14x1.5	3		

5. 左右曲轴箱、变速机构、曲轴、活塞 Crankcase\Transmission\Crankshaft\Piston



序 NO.	件号 Item Code	中文名称 Chinese	英文名称 Description	数量 Q'ty	单价 ¥ \$	
1	FN300-021002-0000	活塞环	Piston Ring	1		
2						
3						
4	FN300-021001-0000	活塞	Piston	1		
5	FN300-020003-0000	活塞销	Pin,Piston	1		
6	FN300-020001-0000	活塞销挡圈	Clip,Piston	2		
7	FN300-022000-0000	曲轴连杆部件	Crankshaft ASSY	1		
8	FN200-041000-0000	主轴组合	Transmission Main Shaft	1		
9	FN200-042000-0000	副轴组合	Transmission Counter Shaft	1		
10	FN300-061000-0000	起动轴部件	Axle, Start	1		
11	FJ200-043005-0000	拨叉轴A	Axle, Gear Shift	1		
12	FJ200-043002-0000	拨叉 I	Right Fork	1		
13	FJ200-043003-0000	拨叉 II	Center Fork	1		
14	FJ200-043004-0000	拨叉 III	Left Fork	1		
15	FJ200-043001-0000	变速鼓	Gear Shift Drum	1		
16	FJ100-040004-0000	主动链轮	Drive Sprocket	1		
17	FJ200-043008-0000	销轴A	Pin A	1		
18	FN300-030001-0000	曲轴箱密封垫	Gasket, Crankcase	1		
19	FN300-031100-0000	右曲轴箱组合	Right Crankcase ASSY	1		
20	FJ100-030015-0000	通气管	Ventillation Pipe Assy	1		
21	FJ100-030016-0000	通气管卡箍	Clip, Ventilation Pipe	1		
22	FJ100-030010-0000	机油滤网组合	Lubracate Oil Filter	1		
23	FN300-030003-0000	汽缸螺栓A M8×235	Cylinder Stud Bolt A M8×235	2		
24	FJ100-062012-0000	铜垫圈 φ8.2×18×2	Copper Washer φ8.2×18×2	4		
25	FJ200-010028-0000	缸头螺母M8	Cap Nut M8	4		
26	FJ200-030044-0000	离合器拉索支架	Bracket ,Clutch Cable	1		
27	GB/T 29.2-2000	螺栓M6×55	Bolt M6×55	1		
28	FM100-033000-0000	机油泵部件	Oil Pump	1		
29	Q/HSQ 7757-2003	O型圈 φ9×2.4	O Ring φ9×2.4	2		
30	GB/T 819-2000	螺栓M6×30	Bolt M6×30	2		

5. 左右曲轴箱、变速机构、曲轴、活塞 Crankcase\Transmission\Crankshaft\Piston



序 NO.	件号 Item Code	中文名称 Chinese	英文名称 Description	数量 Q'ty	单价	
					¥	\$
31	GB/T 290	滚针HK21/28/10	Rolling Bearing HK21/28/10	1		
32	FJ200-043007-0000	五星轮	Stopping Plate	1		
33	GB/T 5783-2000	螺栓M6×25	Bolt M6x25	1		
34	FJ200-040002-0000	定位板弹簧	Spring,Locate Plate	1		
35	FJ200-040300-0000	定位板组合	Locating Plate ASSY	1		
36	GB/T 5783-2000	螺栓M6×20	Bolt M6x20	1		
37	FJ200-044000-0000	变档轴部件	Gearshift Axle ASSY	1		
38	FN300-030004-0000	汽缸螺栓B M8×222	Cylinder Stud Bolt A M8×222	2		
39	FJ100-000001-1014	定位销φ10×14	Pin φ10×14	2		
40	FJ200-030061-0000	档显线组合	Gearshift Switch ASSY	1		
41	FJ100-000001-1014	定位销φ10×14	Locating Pin φ10×14	2		
42	GB/T 276-1994	轴承6204/P6	Bearing 6204/P6	1		
43	GB/T 276-1994	轴承6202-Z	Bearing 6202-Z	1		
44	GB/T 290	滚针NK15/23/12	Rolling Bearing NK15/23/12	1		
45	GB/T 276-1994	轴承6006	Bearing 6006	1		
46	FN300-032002-0000	左曲轴箱部件	Left Crankcase ASSY	1		
47	GB/T6171-2000	螺母M10×1	Nut M10x1	1		
48	FJ100-030027-0000	压线板	Position Plate	1		
49	GB/T 5783-2000	螺栓M6×12	Bolt M6x12	2		
50	FN300-032100-0000	正时链轮挡板	Position plate;Time Chain	1		
51	GB/T 5783-2000	螺栓M6×10	Bolt M6x10	2		
52	FJ100-040005-0000	链轮压板	Lock Plate,Sprocket	1		
53	Q/HSQ 5787-2003	螺栓M6×50	Bolt M6x50	9		
54	FJ100-030019-0000	机油滤网弹簧	Spring,Oil Filter	1		
55	Q/HSQ 7757-2003	O型圈φ35×3	O Ring φ35×3	1		
56	FJ100-030043-0000	机油滤网盖	Cover,Oil Filter	1		
57	Q/HSQ 546-2007	换档轴油封14×28×7	Oil Seal 14x28x7	1		
58	GB/T 290	滚针HK10/14/10	Rolling Bearing HK10/14/10	1		
59	Q/HSQ 546-2007	副轴油封20×34×7	Oil Seal 20x34x7	1		

车架及后平叉 Frame and Rear fork



序 NO.	件号 Item Code	中文名称 Chinese	英文名称 Description	数量 Q'ty	单价	
					¥	\$
1	02011455	仪表支架	Bracket;Speedometer	1		11.00
2	06020036	尾灯工字形橡胶	Rubber Washer	4		0.15
3	0201-250RTS	车架	Frame	1		50.00
4	02011453	发动机前右固定板(平)	Engine fix board right	1		4.50
5	02011452	发动机左固定板(弓形)	Engine fix board Left	1		4.50
6	02011451	发动机上固定板	Engine fix board up	2		4.50
7	07020036	单撑弹簧	spring;Side Stand	1		0.50
8	02011442	单撑	Side stand	1		10.00
9	07010130	后减震	Rear shock Absorber	1		24.00
10	02010460	(后减震)摇架B	Rocker Arm B For Rear shock	1		6.00
11	02010459	(后减震)摇架A	Rocker Arm A For Rear shock	1		6.00
12	02011456	调链器	Chain Tension Adjuster	2		6.50
13	02011450	后平叉	Rear Fork	1		0.15
14	06020034	平叉护套	Rubber Cushion; Rear fork	1		2.00

锁、转向、



序 NO.	件号 Item Code	中文名称 Chinese	英文名称 Description	数量 Q'ty	单价	
					¥	\$
1	10080023	套锁	Lock Sets	1		24.50
2	10020062	平衡块	Counterbalance Block	2		1.50
3	10020060	油门把套	Accelerator Grip	1		1.50
4	02030296	方向把固定座(总成)右	Handlebar Lock right	1		18.75
5	02030298	上联板	Upper Handlebar connection plate	1		33.33
6	10030012	离合器手柄组件	Clutchhandle Assembled	1		7.00
7	02030295	方向把固定座(总成)左	Handlebar Lock Left	1		18.75
8	10020061	左把套	Left Hand Grip	1		1.20
9	12030038	钢碗	Bearing Kit	1		5.00
10	02030297	下联板	Front shock connection plate	1		21.17
11	07010132	前减震器右	Front shock Right	1		60.00
12	07010131	前减震器左	Front shock Left	1		60.00
13	10010030	组合开关(右)	Switch ASSY Right	1		6.00
14	10010029	组合开关(左)	Switch ASSY Left	1		6.00
15	15010021	前轮轴	Axle,Front Wheel	1		
16	15010023	后轮轴	Axle,Rear Wheel	1		

搁脚 Footrest



序 NO.	件号 Item Code	中文名称 Chinese	英文名称 Description	数量 Q'ty	单价	
					¥	\$
1	02050042	搁脚组合前(左)	Front Footrest ASSY(L.)	1		15.44
1.1	02050042-3	换挡花键座(带倒牙球头)	Gear Shift Seater	1		3.00
1.2	02050042-2	换挡拉杆	Gear Shift Rod	1		2.50
1.3	02050042-4	换挡踏板(带球头)	Gear Shift Lever	1		2.50
1.4	02050042-5	前脚踏左	Foot Pedal(L.)	1		
2	02050039	搁脚组合前(右)	Front Footrest ASSY(R.)	1		15.44
2.1	02050039-2	刹车踏板	Rear Brake pedal	1		
2.2	02050039-3	前脚踏右	Foot Pedal Right	1		
3	02010472	左护板支架	Footrest Support(L.)	1		3.00
4	02010473	右护板支架	Footrest Support(R.)	1		3.00
5	02050040	搁脚组合后(左)	Rear Foot rest ASSY(L.)	1		10.00
5.1	02050040-2	后脚踏左	Rear Foot Pedal(L.)	1		
6	02050043	搁脚组合后(右)	Rear Foot rest ASSY(R.)	1		10.00
6.1	02050043-2	后脚踏右	Rear Foot Pedal(R.)	1		

